

# Air Safety Bulletin

ASB 2025/01

## Aeromodelism fields in Luxembourg



---

The aim of this ASB is to raise awareness of potential safety hazards between leisure aviation and activities on aeromodelism fields in Luxembourg.

---

This ASB revises and supersedes the ASB 2023/01.



THE GOVERNMENT  
OF THE GRAND DUCHY OF LUXEMBOURG  
Ministry of Mobility and Public Works

Directorate of Civil Aviation

## Background

Model aircraft have been flown for many years in Luxembourg. These models are often scaled down versions of manned aircraft. Many hobbyists tend to fly from specific, designated sites and as part of a club environment.

Drones regulation 2019/947 generally apply to these clubs, including the height limitation of 120 m (400 feet) above the ground level (AGL). Nevertheless, this regulation also allows a special scheme but then requires an authorisation from DAC.

On the top of the 5 aeromodelism clubs already existing, 1 new authorization has recently been issued for the club located in Lintgen, with a vertical limit of 1.000 ft AGL / GND. This club is located between inbound MERSA VFR route and outbound CARLI VFR route, on the Lintgen plateau. A summary map is appended to this bulletin.

The AIP will be updated accordingly (ENR 5.5 under section 4 “Radio Controlled Model Aircraft”, ENR 6 Aerial Sporting and Recreational Activities Chart and ELLX Visual Approach Chart - AD 2.ELLX-VAC.01).

In the future, other aeromodelism clubs receiving an authorisation to fly higher than 120 meters AGL will also be incorporated in the AIP and the related charts. Please also note that DAC has no control over other VFR charts produced by external party (e.g. “DFS”, “Air Million”, etc.) and, consequently, cannot guarantee that the information will be referenced in there or that the symbology will be harmonized between the different sources (E.g. Green dots in the AIP, logos on the charts, etc.).

## Recommendations

In order to enhance flight safety and strengthen existing safety barriers, the DAC recommends that:

- During Pre-flight Preparation consider and be aware of the existing aeromodelism fields;
- During the flight maintain accurate navigation and altitude in order to avoid mid-air collisions with model aircraft;
- Regularly check the AIP for potential update in Part ENR 5.5 and ELLX Visual Approach Chart.

*This Air Safety Bulletin is a document widely distributed by the DAC. Its aim is not to create any additional safety requirements but to inform all aviation stakeholders about a clearly identified risk and provide recommendations, which are considered reasonably practicable for all involved actors. Visit us at: [www.dac.gouvernement.lu](http://www.dac.gouvernement.lu) for further information and for electronic copies of this ASB.*

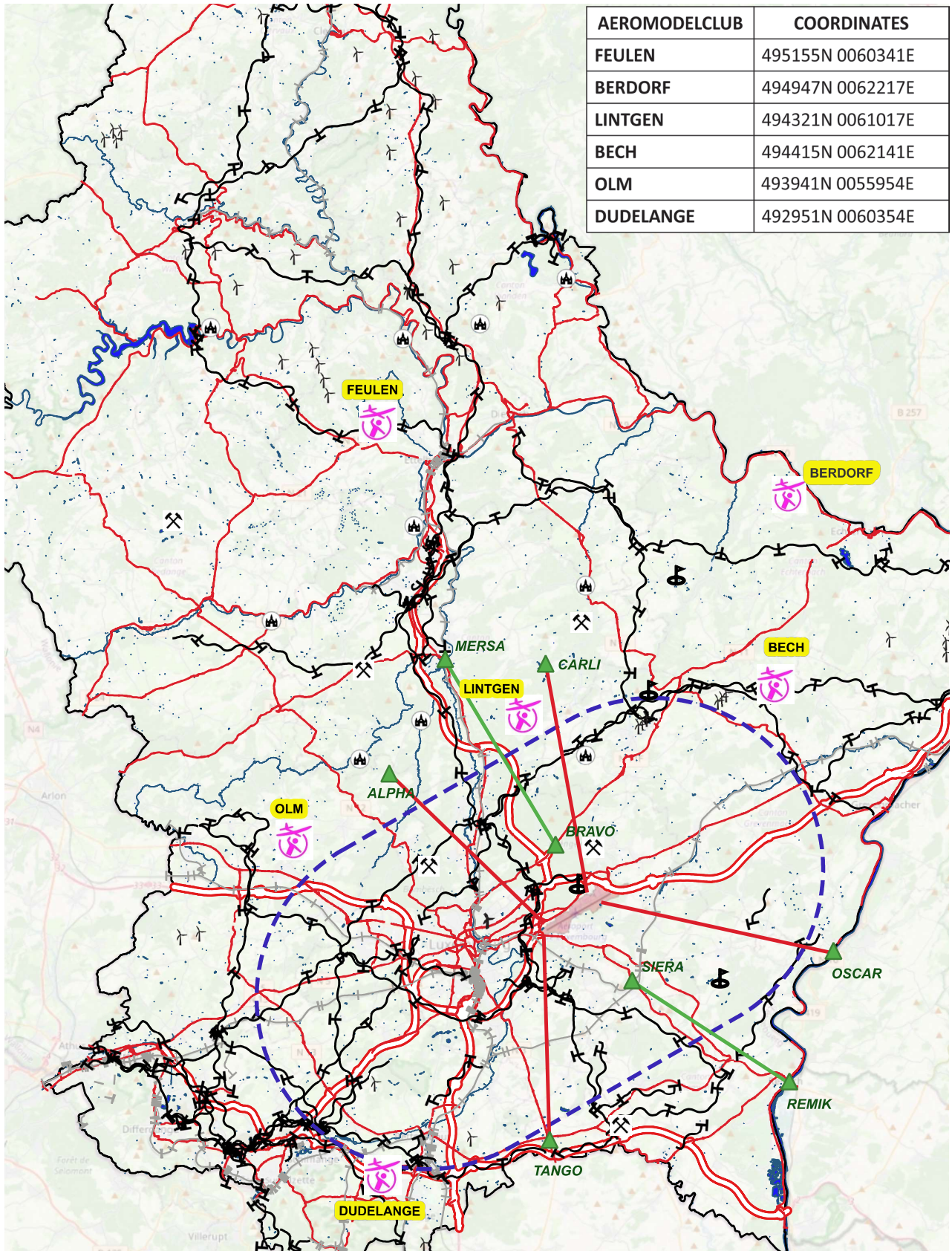
**Help us improve aviation safety** by reporting safety occurrences to the DAC!

In the event of an encounter with an aircraft model, please send a report via [aviationreporting.eu](http://aviationreporting.eu).

### Links and references:

- [aviationreporting.eu](http://aviationreporting.eu)
- eAip : [https://ops.skeyes.be/html/belgocontrol\\_static/eaip/eAIP\\_Main/html/index-en-GB.html](https://ops.skeyes.be/html/belgocontrol_static/eaip/eAIP_Main/html/index-en-GB.html)
- Map Geoportail: <http://g-o.lu/3/3iwx>





AEROMODELCLUB	COORDINATES
FEULEN	495155N 0060341E
BERDORF	494947N 0062217E
LINTGEN	494321N 0061017E
BECH	494415N 0062141E
OLM	493941N 0055954E
DUDELANGE	492951N 0060354E



THE GOVERNMENT  
OF THE GRAND DUCHY OF LUXEMBOURG  
Ministry of Mobility and Public Works

Directorate of Civil Aviation