

Air Safety Bulletin

ASB 2023/01

Aeromodelism fields in Luxembourg



The aim of this ASB is to raise awareness of potential safety hazards between leisure aviation and activities on aeromodelism fields in Luxembourg.



THE GOVERNMENT
OF THE GRAND DUCHY OF LUXEMBOURG
Ministry of Mobility and Public Works

Directorate of Civil Aviation

✈ Background

Model aircraft have been flown for many years in Luxembourg. These models are often scaled down versions of manned aircraft. Many hobbyists tend to fly from specific, designated sites and as part of a club environment.

Drones regulation 2019/947 generally apply to these clubs, including the height limitation of 120 m (400 feet) above the ground level (AGL). Nevertheless, this regulation also allows a special scheme but then requires an authorisation from DAC.

Recently, several aeromodelism clubs in Luxembourg have obtained such authorizations from DAC and defining different height limitations. In this context, the AIP Amendment 6 from 2023 – effective from June 15th 2023 – has been updated accordingly. 5 aeromodelism fields have been listed in Part ENR 5.5 under section 4 “Radio Controlled Model Aircraft” referring to the locations of Bech, Berdorf, Dudelange, Feulen, and Olm, as illustrated in the ELLX Visual Approach Chart (AD 2.ELLX-VAC.01).

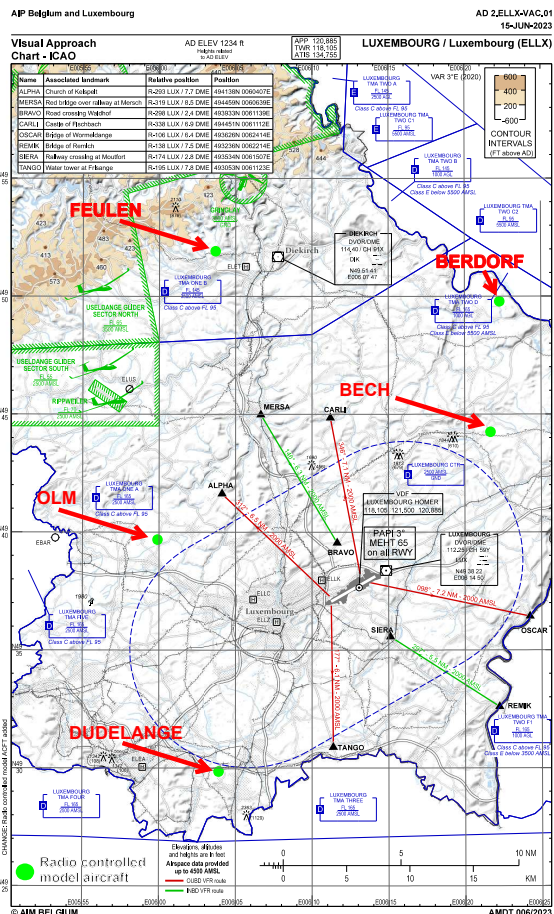
The vertical limit for radio controlled model aircraft at these fields is **1.000 ft AGL / GND**.

In the future, other aeromodelism clubs receiving an authorisation to fly higher than 120 meters AGL will also be incorporated in the AIP and the related charts. Please also note that DAC has no control over other VFR charts produced by external party (e.g. “DFS”, “Air Million”, etc.) and, consequently, cannot guarantee that the information will be referenced in there.

✈ Recommendations

In order to enhance flight safety and strengthen existing safety barriers, the DAC recommends that:

- During Pre-flight Preparation consider and be aware of the existing aeromodelism fields;
- During the flight maintain accurate navigation and altitude in order to avoid mid-air collisions with model aircraft;
- Regularly check the AIP for potential update in Part ENR 5.5 and ELLX Visual Approach Chart.



Source: AIP Part 3 Aerodromes / AD 2 - Public Aerodromes / ELLX Luxembourg / AD 2.24 / AD 2.ELLX-VAC.01



THE GOVERNMENT
OF THE GRAND DUCHY OF LUXEMBOURG
Ministry of Mobility and Public Works

Directorate of Civil Aviation

Help us improve aviation safety by reporting safety occurrences to the DAC!

In the event of an encounter with an aircraft model, please send a report via aviationreporting.eu or e-mail us at safety@av.etat.lu